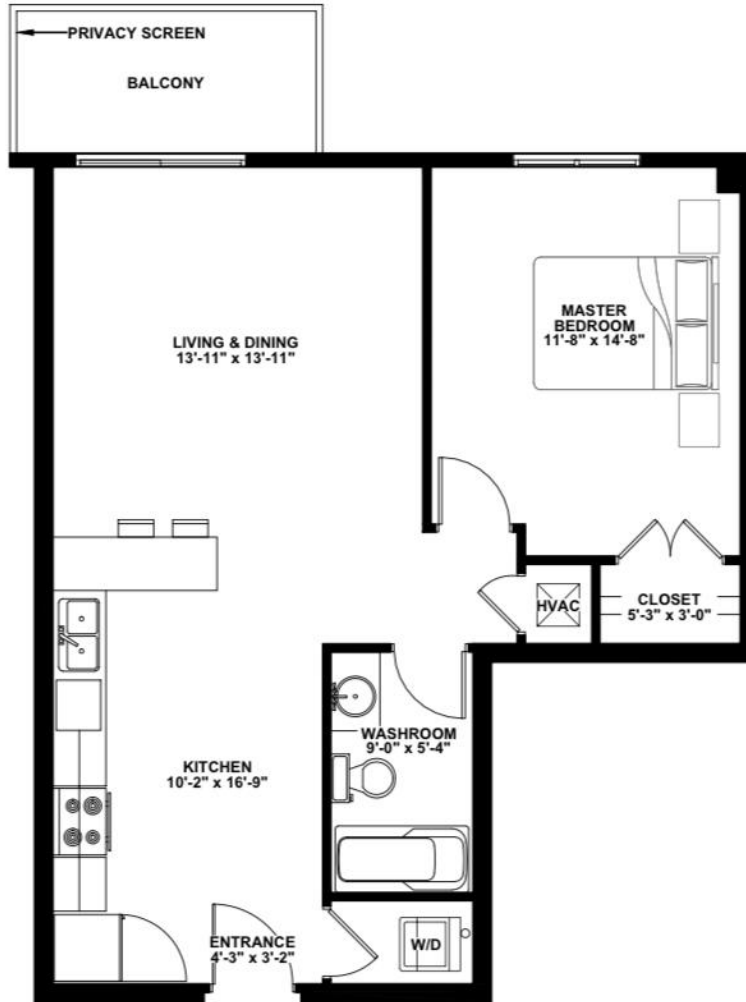
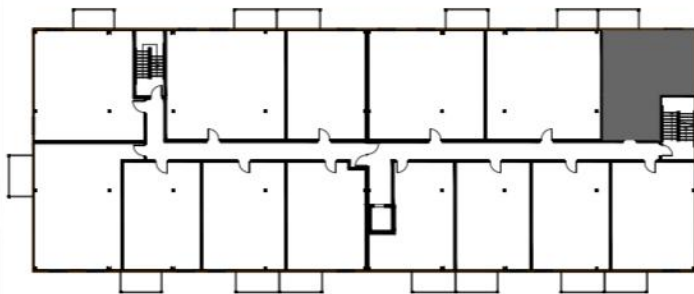


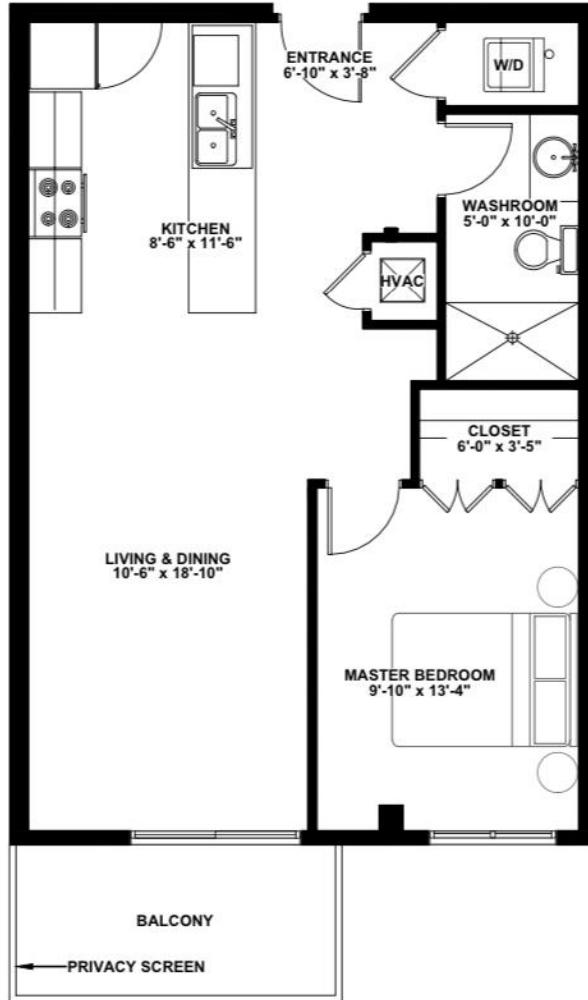
UNITS 106 + 206 + 306 - 1 BEDROOM
GFA: 680 SQ. FT.



KEY PLAN
GROUND + SECOND + THIRD FLOOR LEVEL



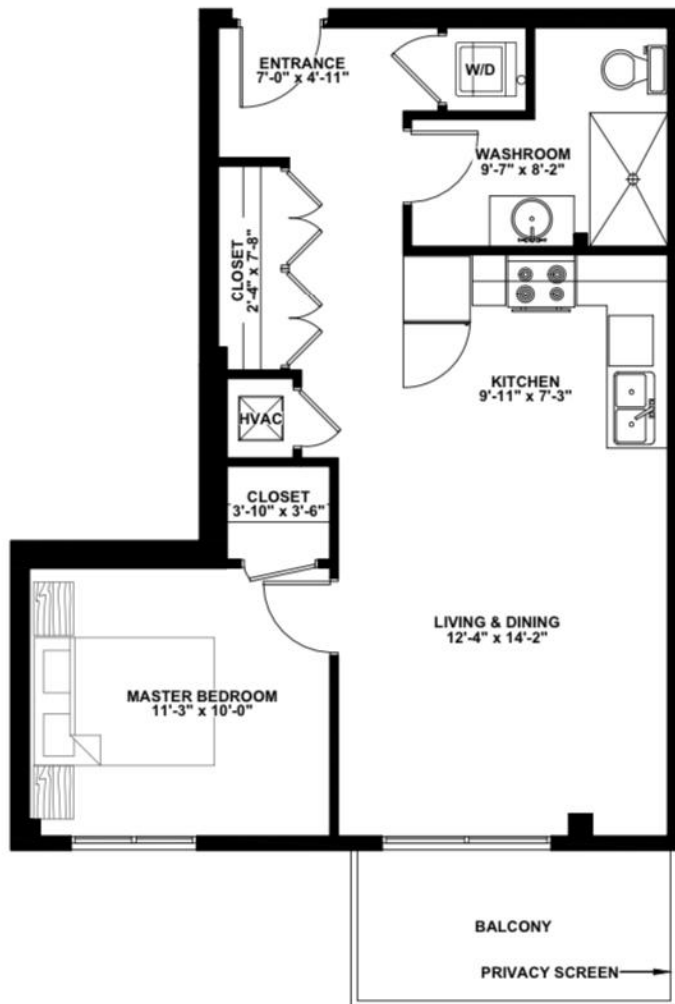
UNITS 209 + 309 - 1 BEDROOM
GFA: 644 SQ. FT.



KEY PLAN
SECOND + THIRD FLOOR LEVEL



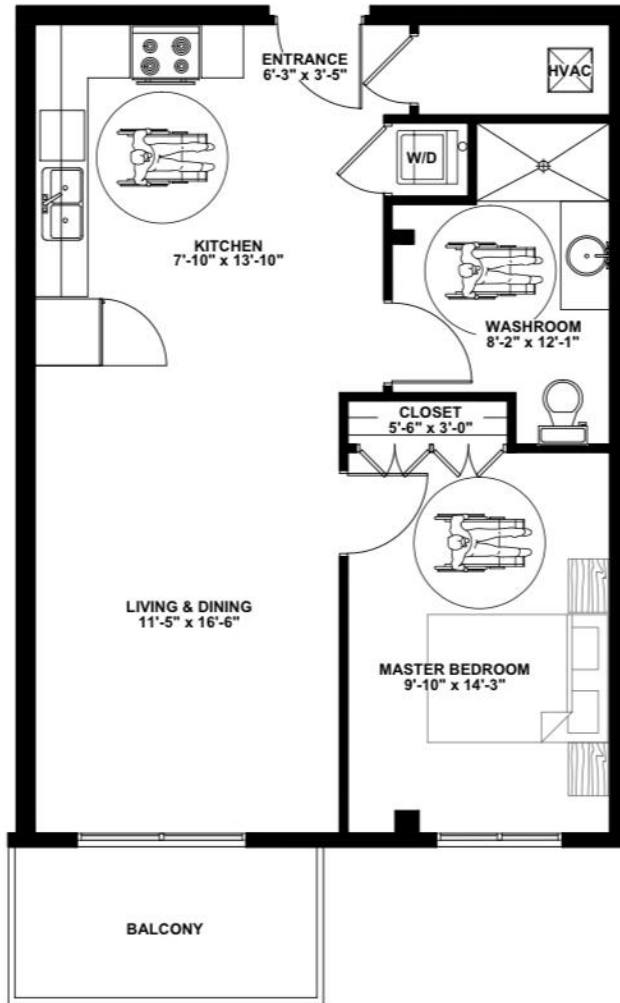
UNITS 210 + 310 - 1 BEDROOM
GFA: 609 SQ. FT.



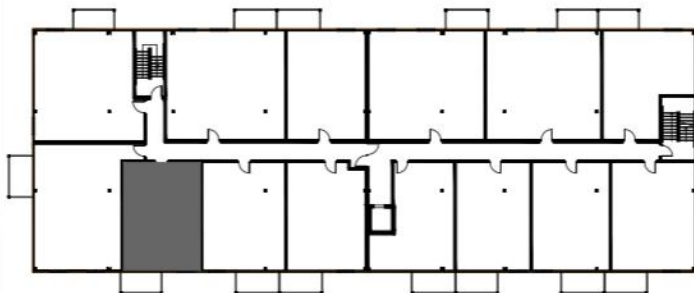
KEY PLAN
SECOND + THIRD FLOOR LEVEL



UNITS 213 + 313 - 1 BEDROOM
GFA: 670 SQ. FT.



KEY PLAN
SECOND + THIRD FLOOR LEVEL



BARRIER FREE SUITE INCLUDES:

- B.F. PATH OF TRAVEL TO:
 - 1 WASHROOM
 - 1 BEDROOM
 - 1 LIVING ROOM
- ±5'-0" (1500mm) TURNING RADIUS

2380 Cleroux Crescent